

CUMHURBAŞKANI KARARI

**Karar Sayısı: 5906**

Ekli kroki ile listede sınır ve koordinatları gösterilen alanın Yıldız Teknik Üniversitesi Teknoloji Geliştirme Bölgesi ek alanı olarak tespit edilmesine, 4691 sayılı Teknoloji Geliştirme Bölgeleri Kanununun 4 üncü maddesi gereğince karar verilmiştir.

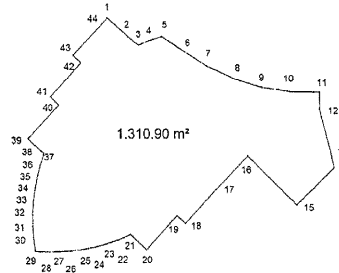
27 Temmuz 2022

Recep Tayyip ERDOĞAN
CUMHURBAŞKANI

YILDIZ TEKNİK ÜNİVERSİTESİ TEKNOLOJİ GELİŞTİRME BÖLGESİ
YILDIZ TEKNOLOJİ GELİŞTİRME BÖLGESİ MASLAK 1453 EK ALANI

K

İLİ : İSTANBUL
İLÇESİ : SARIYER
MAHALLESİ : AYAZAĞA



1000

KOORDİNE ÖZET TABLOSU
UTM30-3 (ITRF96) UTM30-3 (ED50)

Nokta No	Y	X	Y2	X2
1	416,924,038	4,553,874,470	164,956,154	4,561,258,231
2	416,927,510	4,553,871,289	164,959,516	4,561,254,928
3	416,929,521	4,553,869,665	164,961,475	4,561,253,234
4	416,931,252	4,553,870,409	164,963,233	4,561,253,919
5	416,933,639	4,553,871,193	164,965,649	4,561,254,621
6	416,937,781	4,553,865,447	164,969,696	4,561,251,730
7	416,941,546	4,553,863,992	164,973,482	4,561,249,146
8	416,946,501	4,553,863,781	164,978,254	4,561,248,760
9	416,951,255	4,553,862,379	164,982,973	4,561,245,193
10	416,956,155	4,553,861,636	164,987,851	4,561,244,280
11	416,961,305	4,553,861,545	164,993,001	4,561,244,011
12	416,981,287	4,553,858,594	164,992,862	4,561,241,059
13	416,963,223	4,553,850,836	164,994,551	4,561,233,229
14	416,963,717	4,553,848,500	164,994,965	4,561,230,874
15	416,957,248	4,553,841,957	164,988,263	4,561,224,550
16	416,948,665	4,553,850,539	164,979,972	4,561,233,433
17	416,943,095	4,553,844,633	164,974,195	4,561,227,716
18	416,937,611	4,553,838,754	164,968,554	4,561,222,020
19	416,936,193	4,553,840,112	164,967,132	4,561,223,430
20	416,930,763	4,553,834,239	164,961,495	4,561,217,740
21	416,927,873	4,553,836,819	164,958,792	4,561,220,418
22	416,925,988	4,553,835,994	164,956,778	4,561,219,661
23	416,923,955	4,553,835,297	164,954,719	4,561,219,033
24	416,921,883	4,553,834,728	164,952,625	4,561,218,537
25	416,919,778	4,553,834,293	164,950,504	4,561,218,173
26	416,917,650	4,553,833,991	164,948,364	4,561,217,944
27	416,915,507	4,553,833,624	164,946,214	4,561,217,851
28	416,913,358	4,553,833,792	164,944,063	4,561,217,893
29	416,911,211	4,553,833,896	164,941,918	4,561,218,072
30	416,910,940	4,553,836,028	164,941,720	4,561,220,214
31	416,910,803	4,553,838,172	164,941,657	4,561,222,365
32	416,910,803	4,553,840,321	164,941,731	4,561,224,516
33	416,910,938	4,553,842,466	164,941,940	4,561,226,657
34	416,911,208	4,553,844,598	164,942,284	4,561,228,781
35	416,911,613	4,553,846,709	164,942,762	4,561,230,879
36	416,912,150	4,553,848,789	164,943,371	4,561,232,943
37	416,912,818	4,553,850,852	164,944,110	4,561,234,964
38	416,912,318	4,553,851,304	164,943,626	4,561,235,454
39	416,910,029	4,553,853,428	164,941,403	4,561,237,658
40	416,915,456	4,553,859,299	164,947,024	4,561,243,346
41	416,913,887	4,553,860,657	164,945,619	4,561,244,755
42	416,919,419	4,553,866,530	164,951,256	4,561,250,445
43	416,917,993	4,553,867,856	164,949,877	4,561,251,821
44	416,923,424	4,553,873,730	164,955,514	4,561,257,512