

CUMHURBAŞKANI KARARI

**Karar Sayısı: 1879**

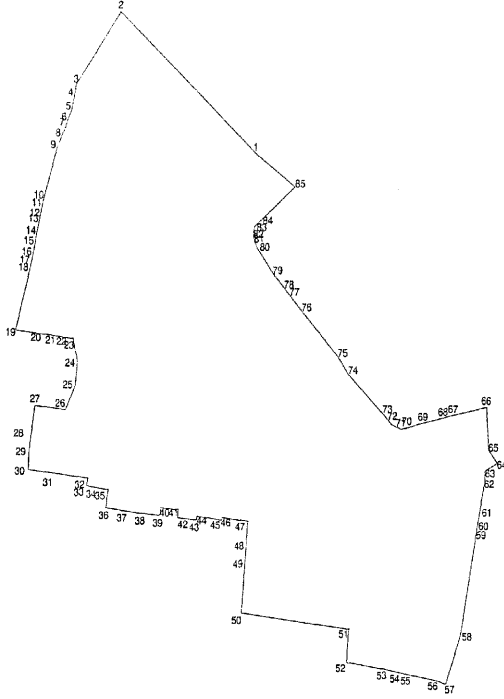
Sinop İli, Boyabat İlçesi, Zincirlikuyu Mahallesi sınırları içerisinde bulunan ve ekli kroki ile listede sınır ve koordinatları gösterilen alanın riskli alan ilan edilmesine, 6306 sayılı Afet Riski Altındaki Alanların Dönüştürülmesi Hakkında Kanununun 2 nci ve ek 1 inci maddeleri gereğince karar verilmiştir.

24 Aralık 2019

Recep Tayyip ERDOĞAN
CUMHURBAŞKANI

24/12/2019 TARİHLİ VE 1879 SAYILI CUMHURBAŞKANI

KARARININ EKİ KROKİ VE LİSTE



SINOP İLİ BOYABAT İLÇESİ ZİNCİRLİKUYU MAHALLESİ RİSKLİ ALAN KROKİSİ

ALAN BÜYÜKLÜĞÜ = 5116.775 m²

SİNOP İLİ, BOYABAT İLÇESİ

ZİNCİRLİKUYU MAHALLESİ

RİSKLİ ALAN SINIR KROKİSİ KOORDİNAT NOKTALARI

Nokta No	Y	X	Nokta No	Y	X
1	397176.801	4593177.712	44	397164.858	4593115.062
2	397150.830	4593202.109	45	397169.809	4593114.352
3	397142.167	4593189.525	46	397169.845	4593114.802
4	397141.766	4593187.566	47	397174.797	4593114.122
5	397141.275	4593185.167	48	397174.472	4593110.815
6	397140.488	4593183.329	49	397174.256	4593107.689
7	397140.094	4593182.410	50	397173.416	4593098.356
8	397139.306	4593180.571	51	397194.182	4593095.754
9	397138.406	4593178.471	52	397193.681	4593090.024
10	397135.748	4593169.457	53	397200.995	4593088.801
11	397135.639	4593169.114	54	397203.758	4593088.252
12	397135.216	4593167.159	55	397205.054	4593087.994
13	397135.004	4593166.182	56	397211.507	4593086.723
14	397134.581	4593164.227	57	397212.870	4593086.174
15	397134.190	4593162.458	58	397215.768	4593094.554
16	397133.772	4593160.541	59	397219.118	4593112.269
17	397133.453	4593159.138	60	397219.357	4593113.616
18	397133.154	4593157.822	61	397219.814	4593115.998
19	397130.376	4593147.280	62	397220.835	4593121.316
20	397134.182	4593146.839	63	397220.787	4593122.897
21	397137.169	4593146.448	64	397223.247	4593124.253
22	397141.140	4593145.842	65	397221.540	4593126.657
23	397141.298	4593145.907	66	397221.223	4593133.982
24	397142.110	4593141.785	67	397213.941	4593132.484
25	397141.642	4593137.661	68	397213.349	4593132.333
26	397139.775	4593133.607	69	397208.883	4593131.265
27	397133.985	4593134.388	70	397205.802	4593130.529
28	397133.362	4593130.616	71	397204.588	4593130.236
29	397132.846	4593126.623	72	397202.700	4593131.122
30	397132.638	4593123.256	73	397201.637	4593132.357
31	397136.392	4593122.753	74	397194.458	4593139.629
32	397144.009	4593121.726	75	397192.491	4593142.667
33	397143.850	4593120.388	76	397185.620	4593150.484
34	397146.225	4593120.024	77	397183.906	4593153.117
35	397147.902	4593119.761	78	397182.184	4593154.393
36	397147.427	4593116.587	79	397180.058	4593156.823
37	397150.870	4593116.049	80	397176.872	4593161.439
38	397154.354	4593115.590	81	397176.337	4593162.516
39	397157.799	4593115.181	82	397176.189	4593163.318
40	397157.978	4593116.559	83	397176.240	4593164.138
41	397161.294	4593116.212	84	397176.524	4593165.154
42	397161.184	4593114.774	85	397184.403	4593172.044
43	397164.810	4593114.443			

PROJEKSİYON: (UTM) Universal Transvers Merkator 3°

DATUM: ITRF96 (International Terrestrial Reference Frame 1996)

DİLİM BOYLAMI: 36